



This toddler and nearly 125 other children searched through brush and other secret places at Town Hall park to find eggs left by the Easter Bunny for the Easter egg hunt Saturday, April 14.
(Photo by Brian Pearson)

Hill plans day of celebration on Earth Day's 20th birthday

By Tony Kontzer
Staff Reporter

Twenty years ago, on April 22, 1970, a new era of environmental awareness in the U.S. was born when an estimated 25 million people nationwide took part in the first Earth Day. They marched, sang, cleaned and spoke in an effort to make Americans realize that this planet is only forever if we consider and examine our treatment of it.

Since that time, the environment has been a powerful source of political and social struggle. The Environmental Protection Agency was formed in the early 1970s. Environmental laws began to be established for the first time. Discussing the latest tragic resource abuse became nouveau and people began to take the future of the planet more seriously.

As with any movement, the environmental cause has had its ups and downs. But in recent years, discussion of the state of the ozone layer, tropical deforestation, what to do with nuclear waste, and how to slow global warming has brought environmental concerns back to the forefront.

THAT PLACES EVEN more significance on this year's 20th anniversary of that first Earth Day. On

Sunday, April 22, people all across the nation will contribute to the continuance of environmental awareness with displays of concern not unlike those 20 years ago. For Hill residents, there will be opportunities to participate as well.

An Earth Day program at Town Hall will provide a wide range of events. Starting with a bike ride beginning at 11:30 a.m. at the Idyllwild Tree Monument, the all day program will feature entertainers, speakers, organic foods, arts and crafts displays, displays of ecologically-sound products, and opportunities to sign various environmental petitions.

Children are perhaps the most important part of Earth Day. It is to their future that all these concerns are geared. Art from the Idyllwild Elementary School and its sister schools in the Soviet Union will be on display. Children will produce an environmental mural inside Town Hall and have a chance to sing folk songs.

Pine trees and seedlings will be distributed and there also will be demonstrations on composting and recycling. Residents will be able to drop off household toxics to be transported to an experimental household waste drop-off center in Hemet.

Continued on page 21

County admits to mistakes made in redevelopment maps

By Tony Kontzer
Staff Reporter

Two advisory maps that appeared in a preliminary plan looking at redevelopment in Idyllwild were incorrect, according to Riverside County Third District Supervisor Kay Cenicerros.

The maps were included in a booklet titled, "Supervisory District 3 Preliminary Plan for Redevelopment Project...Idyllwild Community." The 13-page booklet was prepared by GRC Redevelopment Consultants Inc.

The forming of a redevelopment agency has been considered by the county for several years as a method of

funding a parking lot for Idyllwild. The county has maintained that a parking crisis exists on the Hill, and that additional parking is necessary. The booklet was made available late last year to agencies on the Hill that were asked for their input on redevelopment.

The maps were included to show the outline of zoning designations in the Idyllwild area. But Mrs. Cenicerros' assistant, Melba Hoffman, now says the maps should not have been used as a zoning reference.

"OUR OFFICIAL ZONING map is right and those advisory maps should not be taken seriously," Ms. Hoffman said. "Those maps were prepared more to show boundaries of the redevelopment project and what could be done with the land."

"What happened, I think, is that our redevelopment consultant went to the planning department and said, 'Can you give me a map that I can show redevelopment boundaries on?' I think they forked over one that wasn't current," said Mrs. Cenicerros.

When the redevelopment booklet was released and it included the maps, which had information on zoning, some area business owners and residents expressed concern about the zoning of their properties.

When Jim Braginton, owner of Coulter Optical on

Continued on page 23



San Diego resident Robin Hunt (top) and her daughter, Catherine (second from left) share time with some new friends and Einstein the bunny. All of them attended the American Legion Auxiliary Unit Post 800 Easter egg hunt.

Look inside

Inn directory.....	2	Park notes.....	22
Weather.....	2	Sky watch.....	20
Letters.....	5	Needs home.....	20
News of record.....	12	Real estate.....	24
Well-being.....	14	Classified.....	27
Dining guide.....	15	Service directory.....	27
Calendar.....	16	Past tense.....	31

Earth Day

Continued from page 1

ANOTHER EVENT, THE Earth Day Fair, will take place at the Living Desert Preserve in Palm Desert, where the U.S. Forest Service and state parks will be represented among 30 exhibitors.

The USFS will have a hands-on demonstration of the latest technology being used for information entry and retrieval in the field of forest management.

"Proper management of public lands demands we have adequate and sophisticated methods of obtaining information," said Malcolm Hamilton, district recreation officer with the USFS. "We'll be moving into an era where all our mapping needs will be digitized and computerized."

The Mount San Jacinto State Park staff also will be on hand with a variety of demonstrations, including a hug-a-tree program, which will show children survival methods available to them should they be separated from their parents in the wilderness. The state park also will have a demonstration of a mountain rescue.

The fair will occur during the Living Desert's normal operating hours, 9 a.m. to 4:30 p.m. Admission is \$5 for adults, \$4.50 for seniors 62 and over, and \$2 for children ages 3-15. Children who bring in an aluminum can for recycling will be admitted free.

Ikes to aid USFS fielding questions

To help answer questions about the San Jacinto Mountains, volunteers from the Izaak Walton League will work with the U.S. Forest Service on Saturday, April 21, between 10 a.m. and 3 p.m. at the Idyllwild Ranger Station at Highway 243 and Pine Crest Avenue.

The volunteers will be outside the building to field questions about trails and the environment. Regular Forest Service business will be conducted indoors.

The project is a test before the summer months to see if help is needed to answer the abundance of questions usually put to Forest Service personnel.

New center accepts hazardous wastes

The problem of what to do with hazardous household wastes can be alleviated, at least during the month of April, by dropping off appropriate waste materials at the Riverside County Mobile Household Hazard Waste Collection Center at 595 N. Juanita Street, Hemet.

The center will remain in Hemet through Monday, April 30. It will then be moved for a month to Thermal.

The date for the center's return to Hemet has not yet been set.

The tentative weekly schedule in Hemet is 10 a.m.-2 p.m., Tuesdays, Wednesdays and Thursdays.

There is no charge.

Earth Day exhibit at library displays recyclable material

An exhibit of recyclable materials now on display at the branch library was arranged by Adrin Chellton, 10th grade, and Nicholas Roozen, ninth grade, in honor of Earth Day, Sunday, April 22. They are students of the Idyllwild School of Earth Science, a home high school led by John Mudd.

Mr. Mudd is an organizer of the Earth Day activities planned for Idyllwild.

Earth Day to be finalized

John Mudd, one of the Hill's organizers of Earth Day celebrations and observances, said that the group planning the event will hold its final meeting 7-8 p.m. Friday, April 20, in the Town Hall Basement.

Local Earth Day festivities are scheduled for noon-dusk, Sunday, April 22, at Town Hall. A full program of varied activities and entertainments will be presented both inside the building and on the grounds.



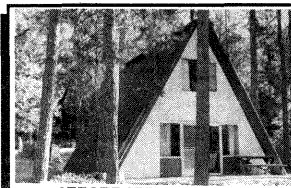
FERN VALLEY FAMILY HOME

Comfortable mountain home, offering charming cedar and knotty pine interior, with 4 bedrooms, 1-3/4 baths, 2 brick fireplaces plus a wood stove, Bruce oak flooring, extensive decking, detached garage/workshop/playroom with loft, and beautiful large, private fenced lot. \$212,000



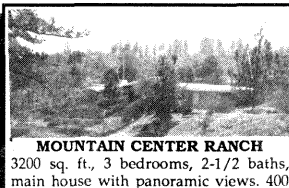
MORE FOR THE MONEY

Well over 4000 sq. ft. of mtn. living in this 5 bdrm., multiple bath. Fern Valley log cabin. Situated on a sunny F.V. lot in quiet area on a cul-de-sac. Attached 2 car garage, built-in bar, spa, fireplace, barbeque area. And...a great buy at \$349,500.



AFFORDABLE A-FRAME

Extra clean mountain A-Frame on near level wooded lot, with 2 bdrm., 3/4 bath., woodstove, and comes partially furnished. \$90,000.



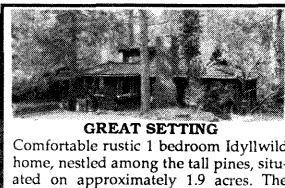
MOUNTAIN CENTER RANCH

3200 sq. ft., 3 bedrooms, 2-1/2 baths, main house with panoramic views. 400 sq. ft. maid/guest quarters. Plus 750 sq. ft. caretaker's house. 8 box stalls, tack room, fenced and much more. Ideal for bed & breakfast. Priced to sell at \$350,000



COMMERCIAL ACREAGE

Primed for development, this 6.5 acre property, consisting of four parcels on both sides of Hwy. 243, is the former site of Taylor's Lodge in Mountain Center, and offers many options for Commercial/Retail projects. \$900,000.



GREAT SETTING

Comfortable rustic 1 bedroom Idyllwild home, nestled among the tall pines, situated on approximately 1.9 acres. The property consists of a completely remodeled guest house, greenhouse, double garage, large workshop and much more. Close to town yet secluded. A must see. \$325,000.

NEWLY LISTED LOTS
Beautifully wooded Big Cedar Glen lot. \$42,500.

LEVEL FERN VALLEY
within easy walking distance to F.V. corners. Positive perc test and engineer report on file. \$46,500.

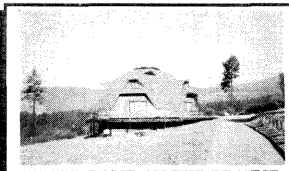
ONE ACRE SECLUDED PARCEL
with spectacular views and great building site. \$72,500.

SECLUDED, AFFORDABLE
parcel for just \$29,500.



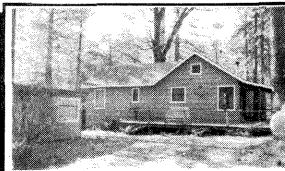
CREEKSIDE RETREAT

Large 3 bdrm., 1-3/4 bath home located on Strawberry Creek, with dramatic cathedral ceilings, expansive windows, streamside decking, level parcel, close to town and on sewer. \$198,000.



LITTLE DOME ON THE PRAIRIE

Beautiful Mountain Center setting, with outstanding views, highlights this energy efficient geodesic dome with 3 bdrms., 2 baths, fireplace, wood interior, skylights, lots of sun and more. \$155,000.



NEWLY LISTED CABIN

Charming cottage, attractively furnished, with 1 bedroom, 1 bath, wood burning stove, laundry area, carport, and overlooking a seasonal stream. An ideal getaway for only \$92,500.

659-2125

MAIN OFFICE - 54295 N. Circle Drive
Robin Oates, Broker
Sparky Allert, Associate Broker
Bill Sperling, Associate Broker
Dashell Bookout, Associate
Lasca Terhorst, Associate Broker

CAPPARELLI and OATES



659-4673

LOG CABIN - 54230 N. Circle Drive
Pete Capparelli, Broker
Claire Clah, Associate
Edna Traweck, Associate
Jim Crawford, Associate
Karen Roseman, Associate Broker
Ron Schingo, Associate